

Allegro 9246-02 Supplied Air Shield Welding Helmet Respirator

SPECIFICATIONS

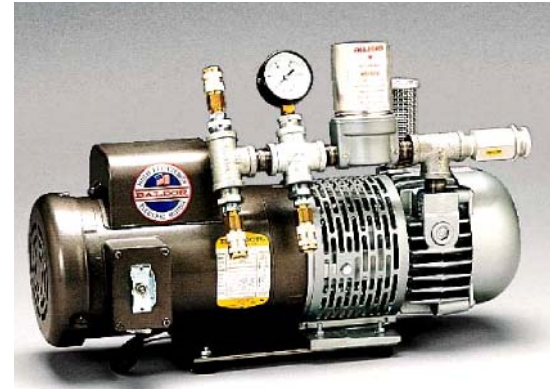
Product Description: **AMBIENT AIR PUMP A-1500 TE**
 Part Number: **9832**
 Style: **ROTARY VANE**

GENERAL DESCRIPTION:

Portable air source for up to three full or half face respirator users, or two hood users. Solid performance in multi-worker applications, cleaning, sanding or chemical handling operations.

CONSTRUCTION:

- Rigid metal base & housing with four rubber feet
- Brass & galvanized steel plumbing
- Quick-connect Rectus (OBAC) fittings (other fittings available upon request)
- Adjustable brass pressure relief valve
- Pressure gauge 0-1 5 psi (0-1.03 bar)
- Fan guard
- Powder coated gray



PUMP

Type: Oil-less, rotary vane, direct driven
 Vanes: Carbon construction (4ea/ replaceable) (3.5" (8.89cm) X 1.3" (3.40cm) X 0.188" (.47cm)
 Inlet Filter: 50 micron felt material
 Exhaust Filter: 0.3 Micron HEPA
 Working Pressure: 2-12 psi (.14-.83 bar) (15 psi max (1.03 bar))
 Performance: 0-20 CFM (0-33.9 m³/hr) (adjusted via pressure relief valve)
 Airline length: 100 Feet (30.4m) maximum, from pump to respirator (sold separately)
 Noise level: At Pump: 95 dB
 At 6 feet (1.82m): 85 dB
 At 10 feet (3.04m): 78 dB

MOTOR:

HP: 1½ HP, TEFC continuous duty
 Certifications: UL Recognized, CSA Certified
 Volts: 115V/230V AC Single Phase, 60 Hz
 Current Draw: 12.4 A @115V (6.2 A @ 230V)
 RPM: 1725
 NEMA Nom Eff: 80
 Cord: 8' (2.43m) 14/3 AWG SJTW-A 300V Neoprene medium duty
 Switch: Toggle, external ON/OFF
 Plug: NEMA 5-15P (L6-20P in 230V configuration) 3 prong

DIMENSIONS:

Length In (cm)	Width In (cm)	Height In (cm)	Weight Lbs (Kg)
23 ½" (59.6 cm)	9 ½" (24.1 cm)	15 ½" (39.7 cm)	97 lbs (43.99 kg)